



www.gov.uk/englandcoastpath


England Coast Path Stretch:
Calshot to Gosport


NATURAL
ENGLAND


Map A: Key map - Calshot to Gosport

Report number and title


- 1 Calshot to Itchen Bridge
- 2 Itchen Bridge to Hamble Warsash Ferry (Pink Ferry)
- 3 Hamble Warsash Ferry (Pink Ferry) to Fareham/Gosport Borough Council Boundary


Extent of proposals 

Extent of proposals in each chapter 

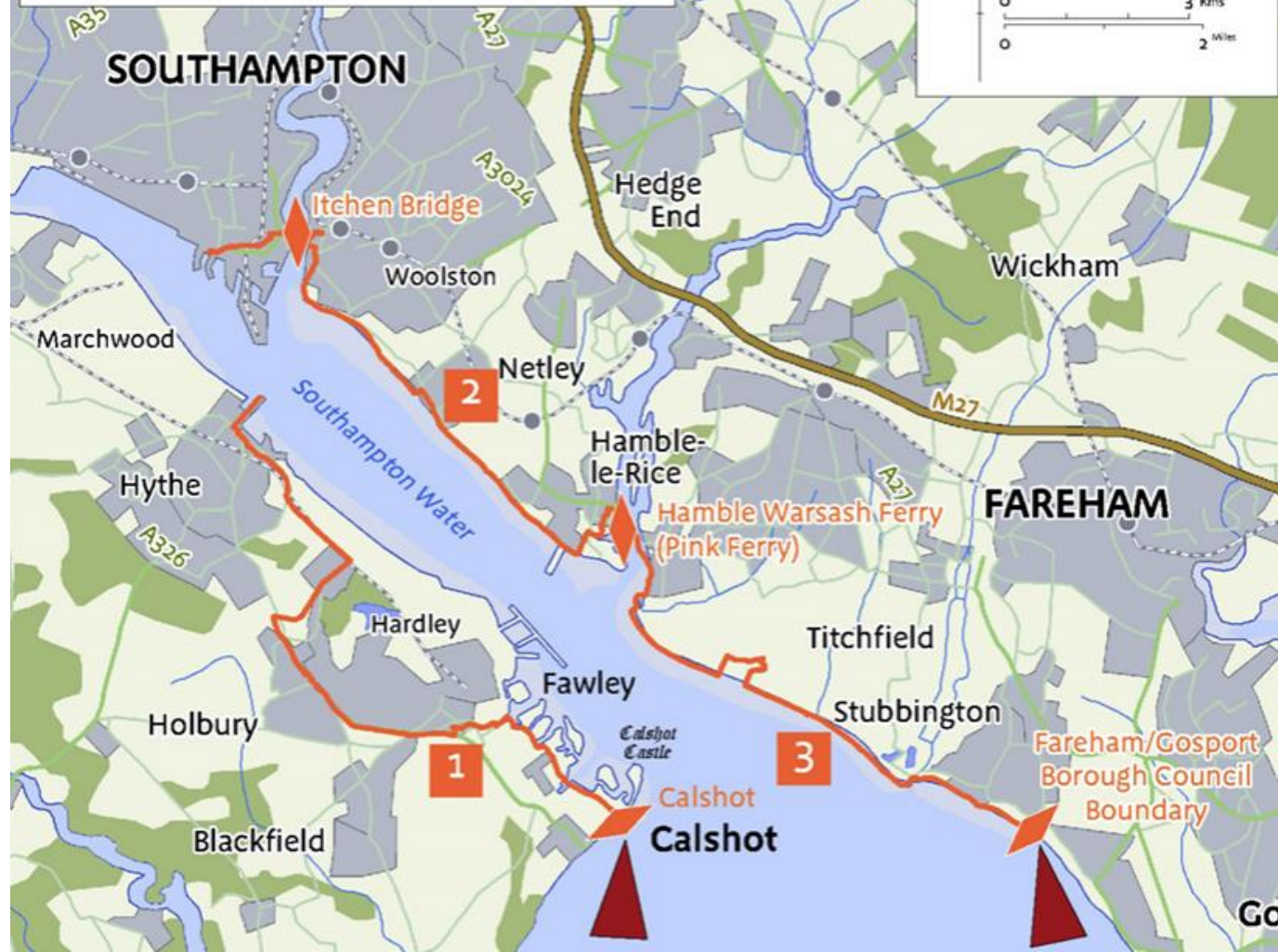
Motorways 

A road 

B road 

Railway & station 

N



Map C: Key Statutory Environmental Designations on the Calshot to Gosport stretch

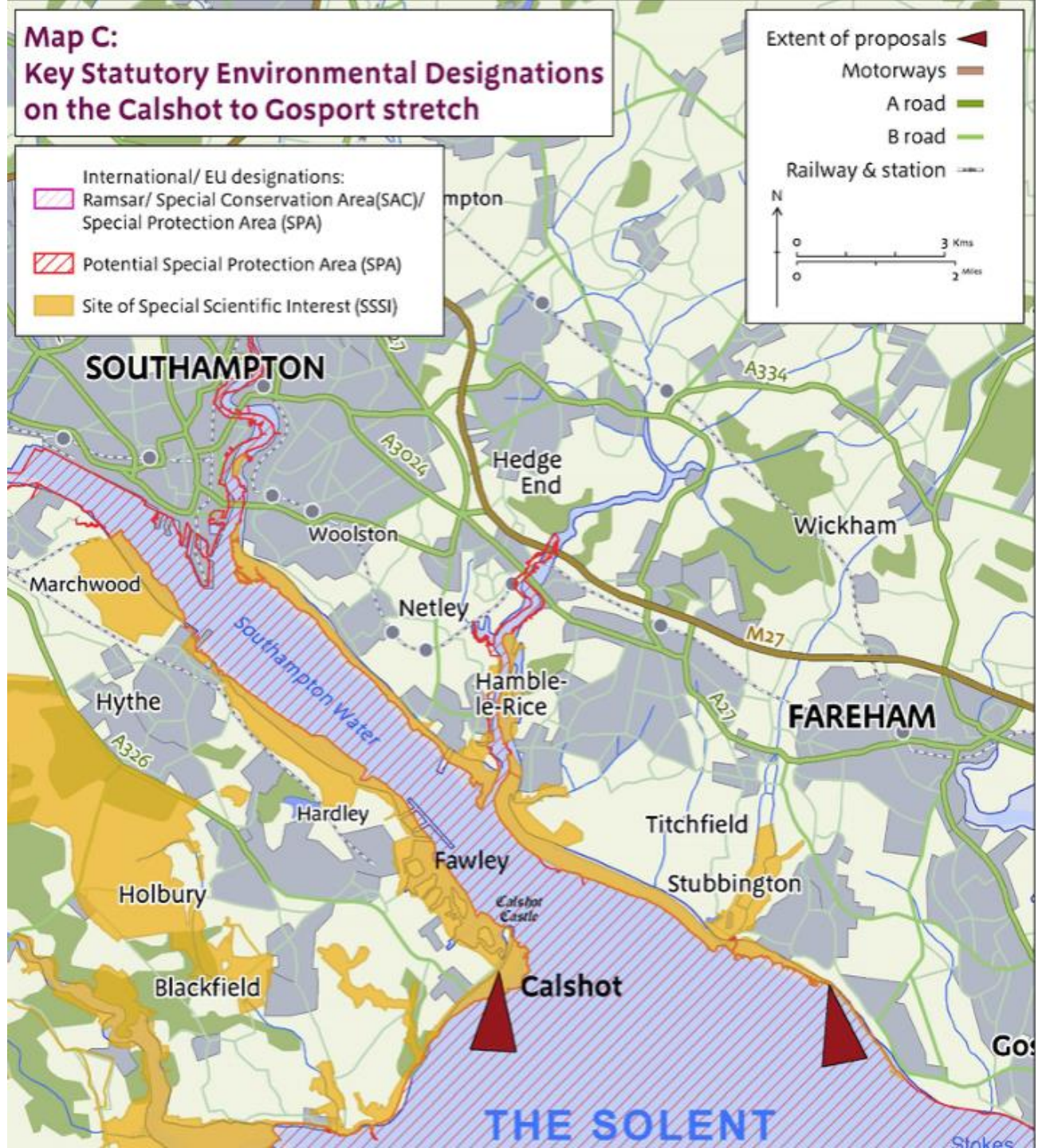
- International/ EU designations:
 - Ramsar/ Special Conservation Area(SAC)/ Special Protection Area (SPA)
 - Potential Special Protection Area (SPA)
 - Site of Special Scientific Interest (SSSI)

Extent of proposals

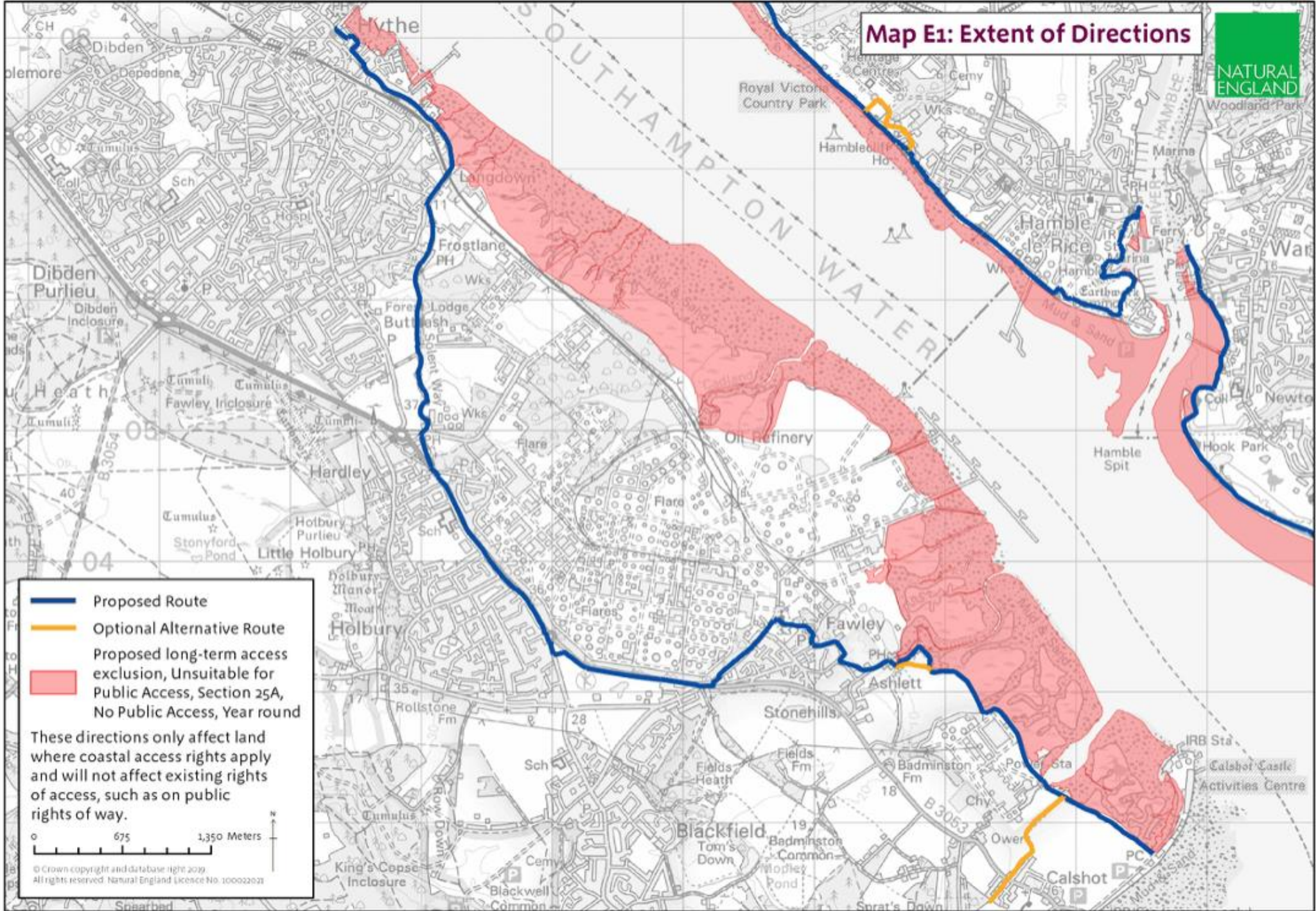
- Motorways
- A road
- B road
- Railway & station

N

0 3 Kms
0 2 Miles



Map E1: Extent of Directions

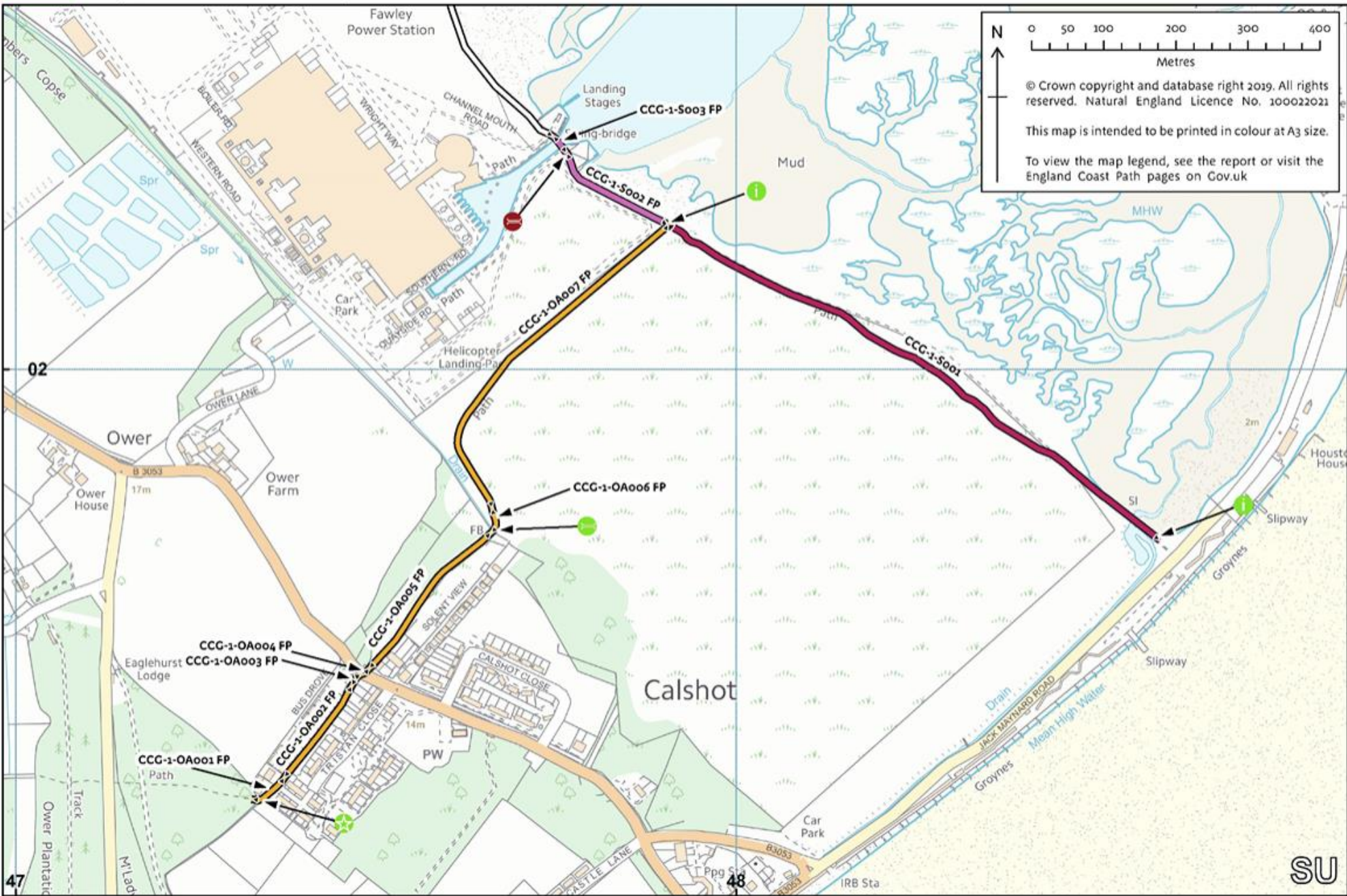


- Proposed Route
- Optional Alternative Route
- Proposed long-term access exclusion, Unsuitable for Public Access, Section 25A, No Public Access, Year round

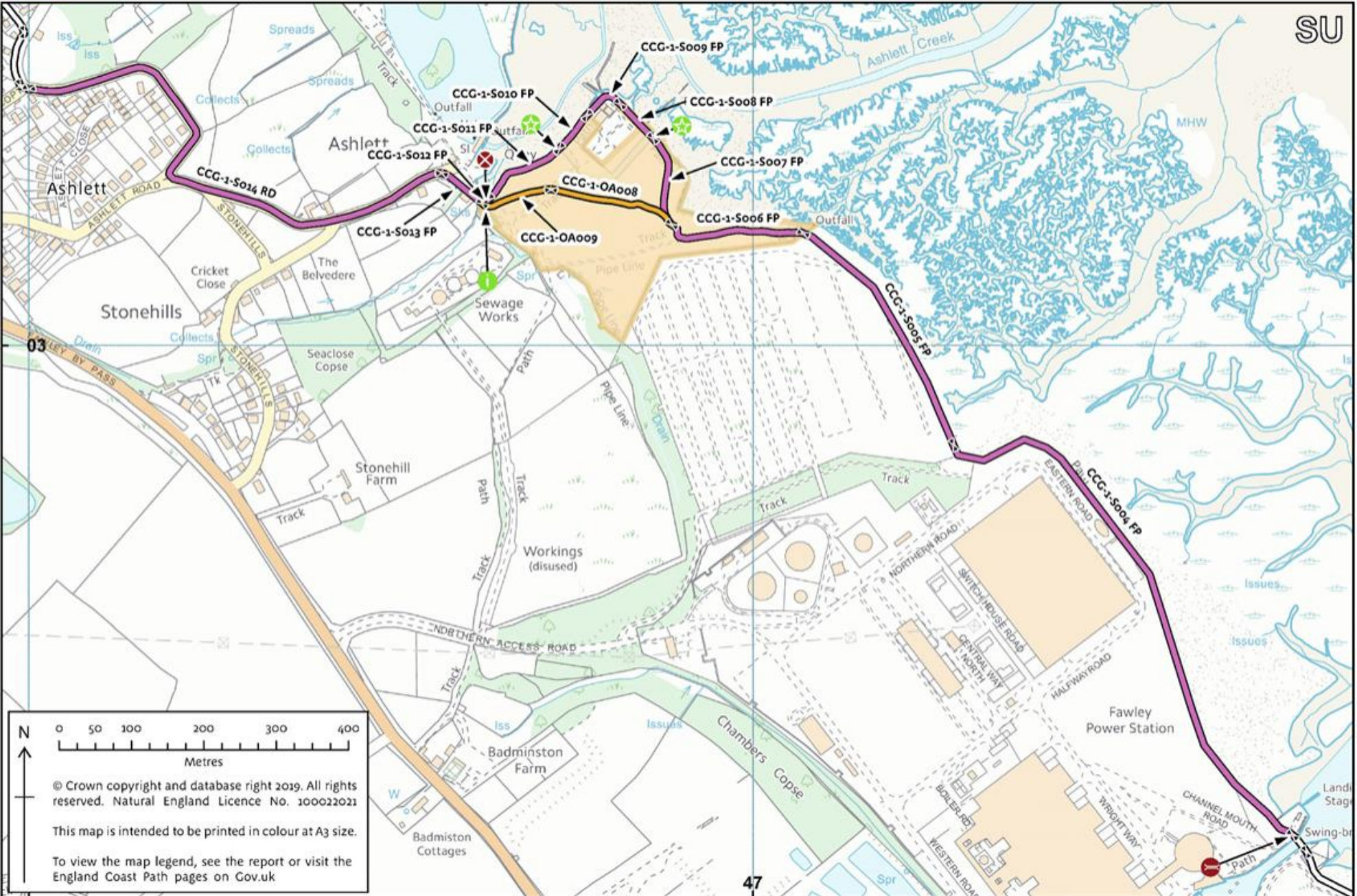
These directions only affect land where coastal access rights apply and will not affect existing rights of access, such as on public rights of way.

© Crown copyright and database right 2019
All rights reserved. Natural England licence No. 100022021

Map CCG 1a: Calshot to Fawley Power Station



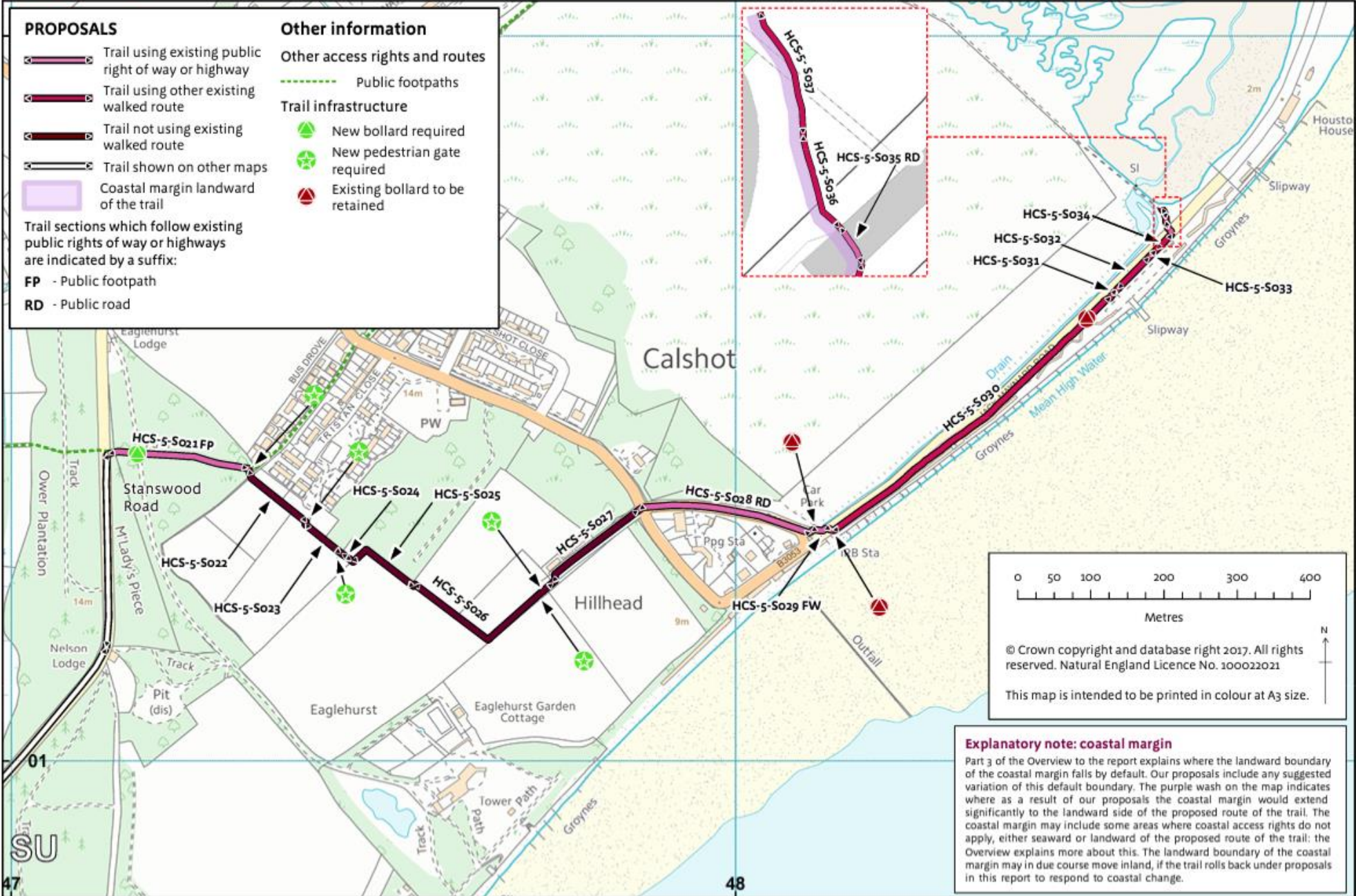
Map CCG 1a: Calshot to Fawley Power Station



Map CCG 1b: Fawley Power Station to Ashlett

SU

Map 5f: Stanswood Road to Calshot



Map 5f: Stanswood Road to Calshot



DISCOVER

CONSERVATION

COMMUNITIES

PLANNING

THINGS TO DO

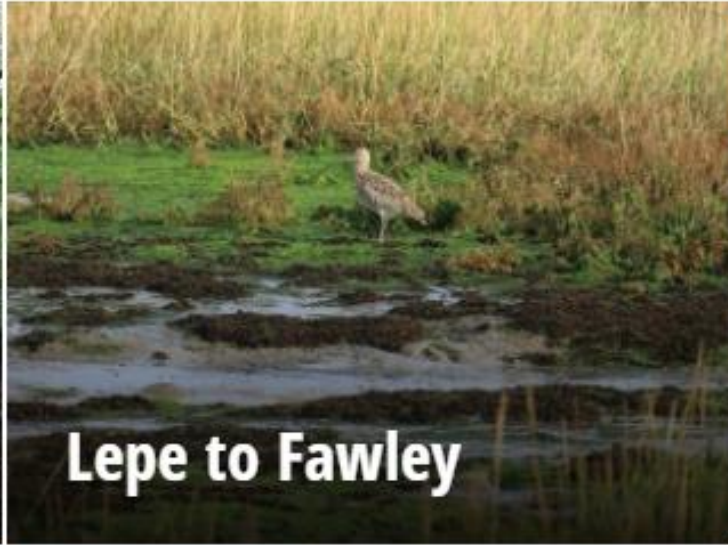
VISITING

Historic routes

[Historic Routes and Past Pathways - New Forest National Park Authority \(newforestnpa.gov.uk\)](http://newforestnpa.gov.uk)



Carters Lane



Lepe to Fawley



Rockford Common



**Rockford Common
(tracks only)**



Stuckton Iron Works



Tatchbury Mount

Historic stories

Listen to a dramatisation of the riot at Stuckton Iron Works in 1830 and walk the [Stuckton Iron Works trail](#).

A SoundCloud player interface for the audio track "The Riot at Stuckton Iron Works. 1830". The player features a red play button icon in the top left corner. The track title is displayed in a black box with white text. In the top right corner, the SoundCloud logo and a "Share" button are visible. The background of the player is a photograph of a dirt path winding through a lush green forest. A white audio waveform is overlaid at the bottom of the player, and a progress bar on the right indicates the current position at 16:49. A "Cookie policy" link is located in the bottom left corner.

Listen to a dramatisation of the tragic tale of William Phillips and walk the [Tatchbury Mount trail](#).

A SoundCloud player interface for the audio track "The Tragic Tale of William Phillips - Caroline's story. 1901". The player features a red play button icon in the top left corner. The track title is displayed in a black box with white text. In the top right corner, the SoundCloud logo and a "Share" button are visible. The background of the player is a photograph of a dirt path winding through a lush green forest. A white audio waveform is overlaid at the bottom of the player, and a progress bar on the right indicates the current position at 15:12. A "Cookie policy" link is located in the bottom left corner.



Landscape Enhancement Initiative

About the initiative

The Landscape Enhancement Initiative (LEI) is a grant scheme that forms an important part of National Grid's Visual Impact Provision project.



"National Grid's Landscape Enhancement Initiative aims to provide up to £24 million over six years (2015-2021) for localised visual improvement projects."

Chris Baines, broadcaster, environmentalist and chairman of the Visual Impact Provision project

Stakeholder driven and developed by National Grid to make use of an allowance made available by Ofgem – the LEI will help fund local visual improvement schemes that reduce the landscape and visual impacts of existing National Grid electricity transmission lines across English and Welsh Areas of Outstanding Natural Beauty (AONBs) and National Parks.

Map Key

National Grid LEI

— Promoted Routes

Pylons

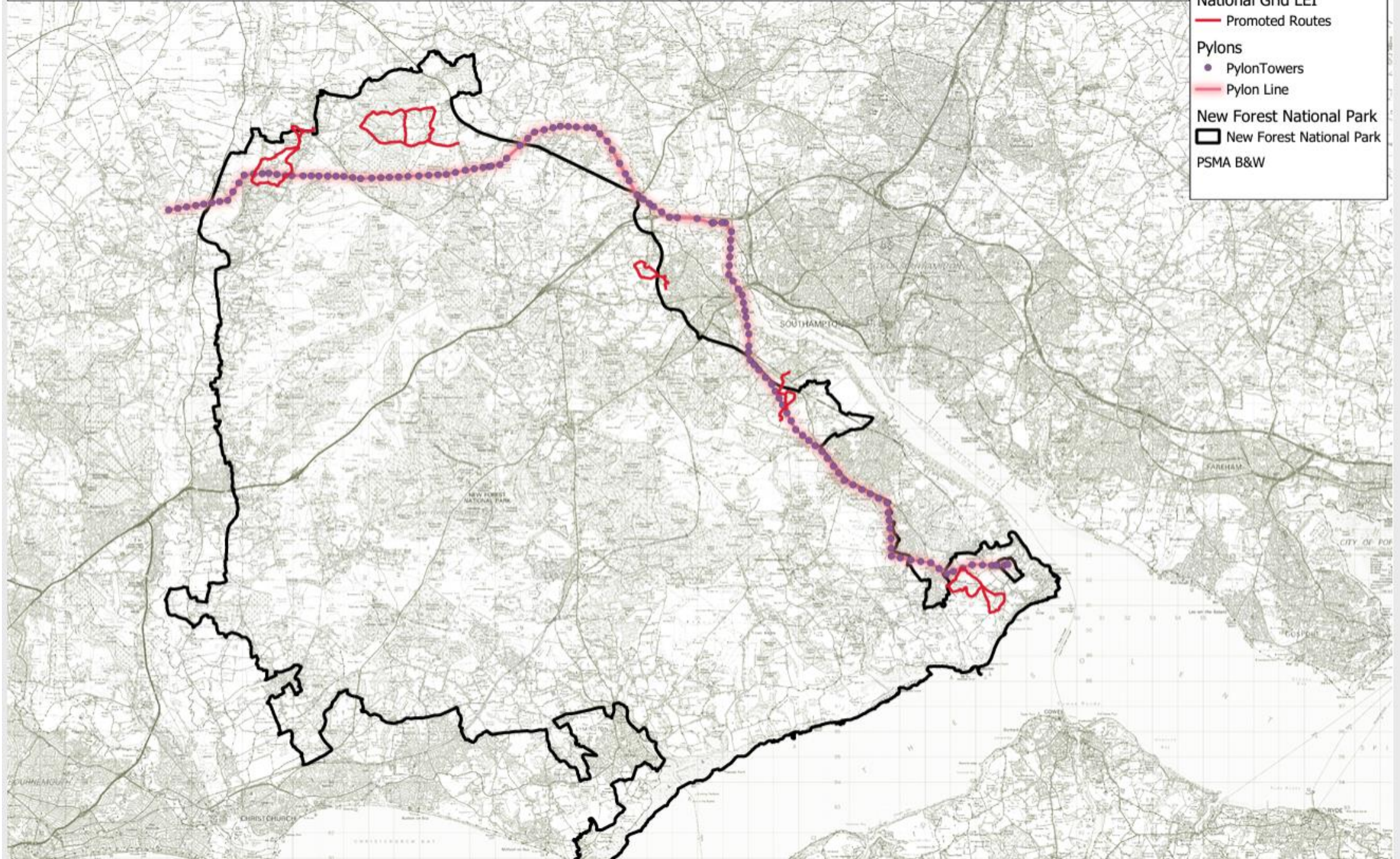
• Pylon Towers

— Pylon Line

New Forest National Park

▭ New Forest National Park

PSMA B&W



Map Key

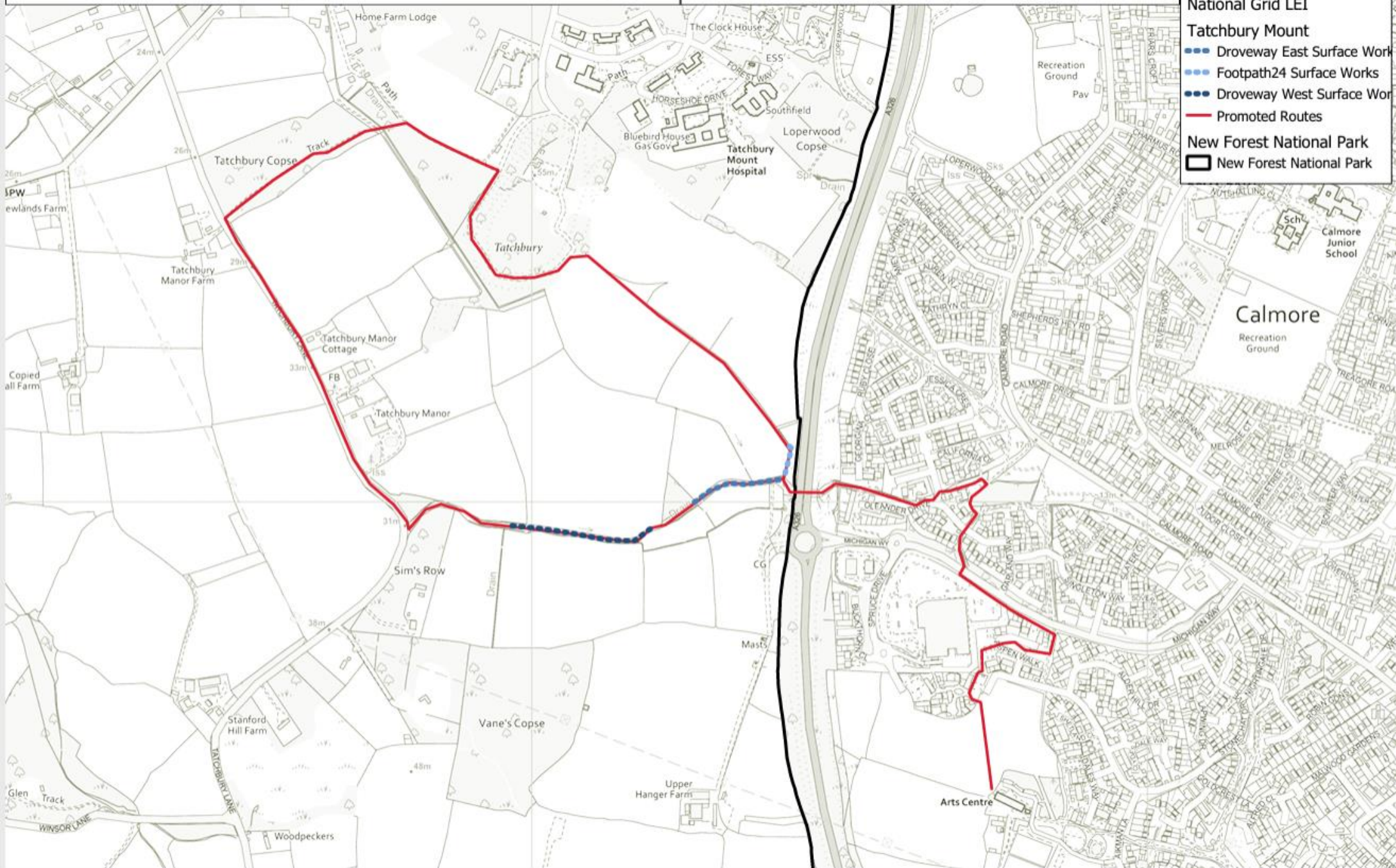
National Grid LEI

Tatchbury Mount

- Droeway East Surface Work
- Footpath 24 Surface Works
- Droeway West Surface Work
- Promoted Routes

New Forest National Park

- ▭ New Forest National Park



New Forest NPA Landscape & Access Enhancement Project

Map 8. Showing works to the Landford & Hamptworth promoted route.

Map Key

National Grid LEI

Land&Hampt

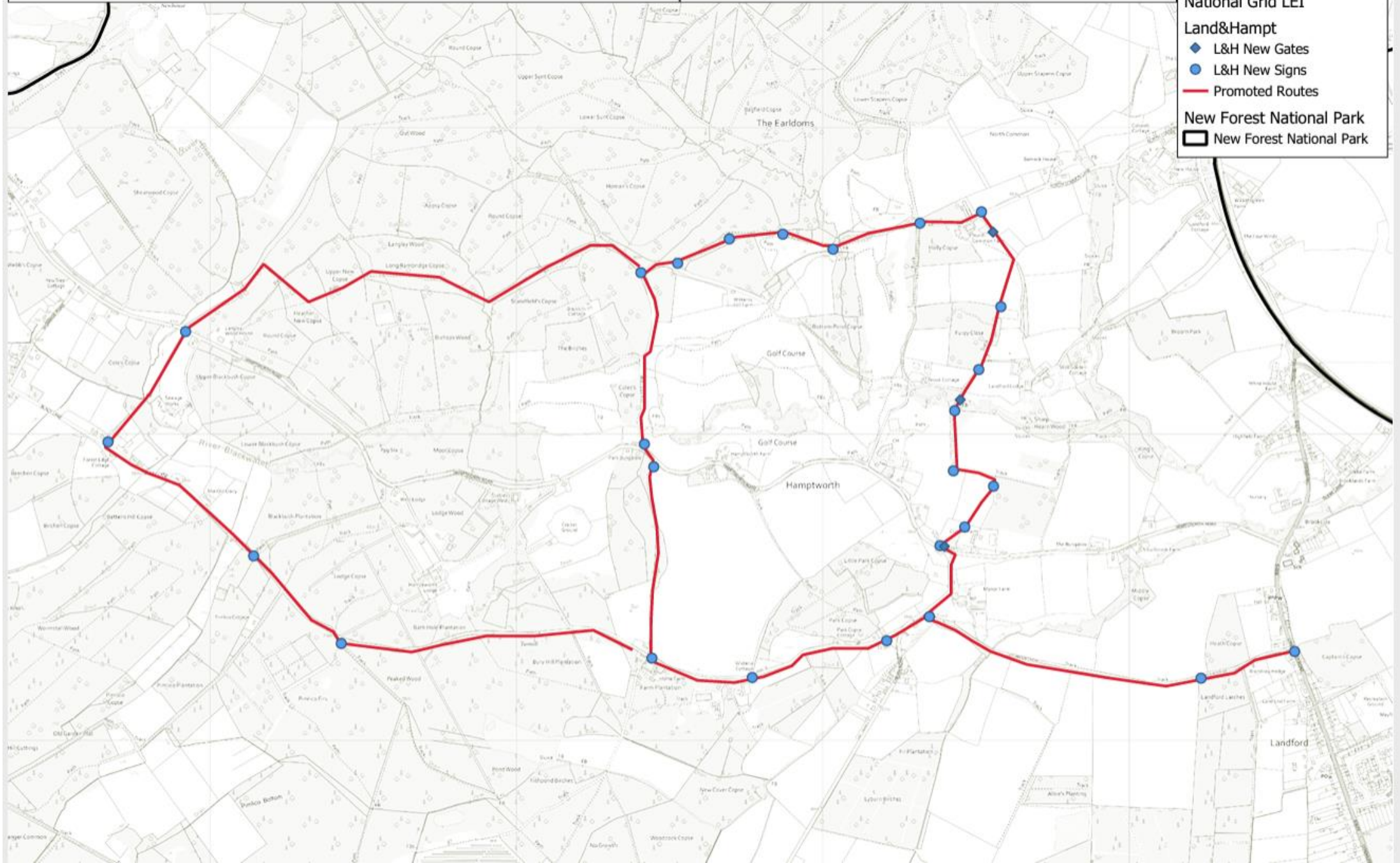
◆ L&H New Gates

● L&H New Signs

— Promoted Routes

New Forest National Park

▭ New Forest National Park



Map Key

National Grid LEI

Pylons

● Pylon Towers

— Pylon Line

Hale & Woodgreen

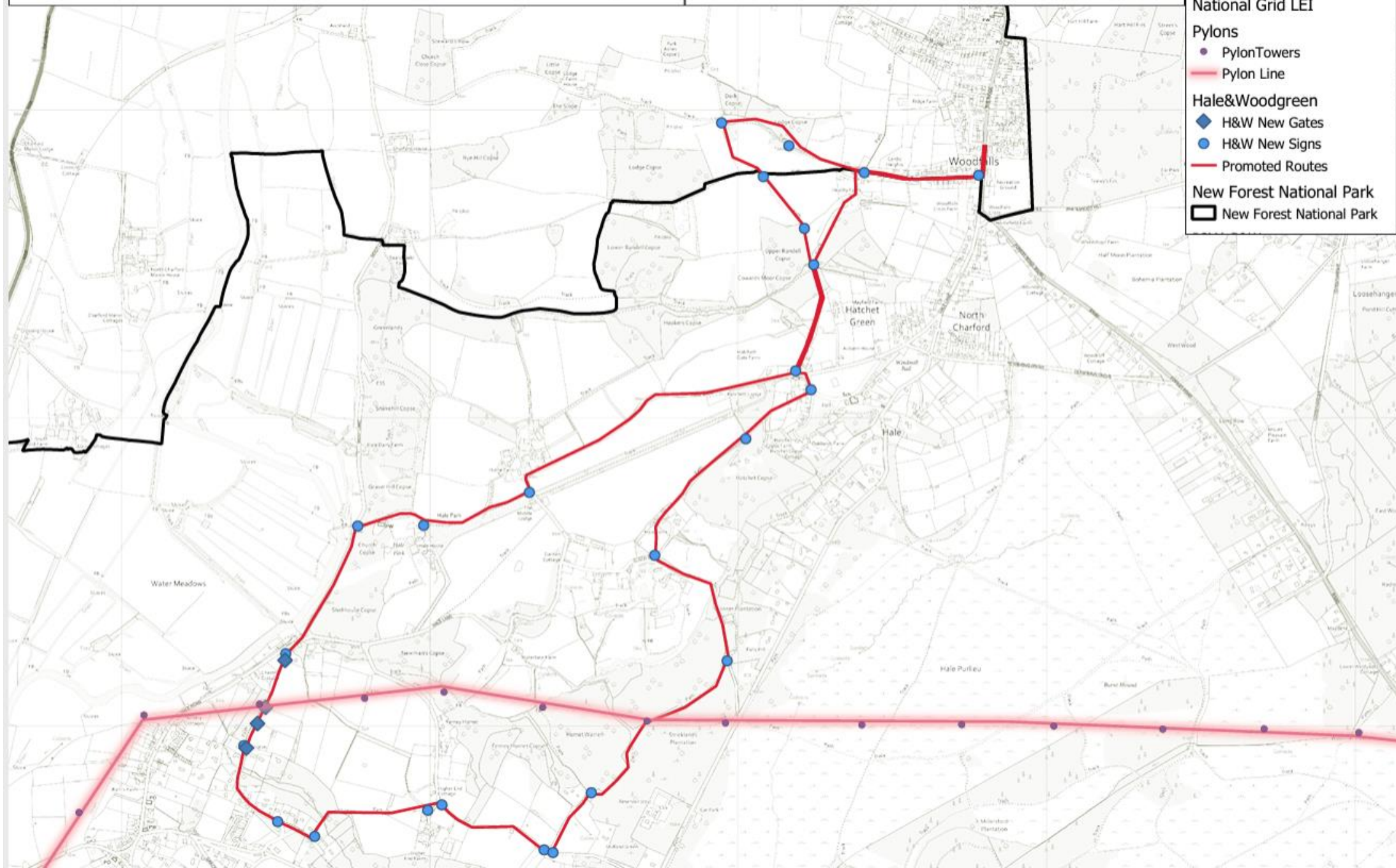
◆ H&W New Gates

● H&W New Signs

— Promoted Routes

New Forest National Park

▭ New Forest National Park



Farming in Protected Landscapes opens in July

[Will Pryer](#), 24 June 2021 - [Things we're doing](#), [Ways to get involved](#)



Picture: Lake District National Park Authority

The programme will fund projects that:

- support nature recovery
- mitigate the impacts of climate change
- provide opportunities for people to discover, enjoy and understand the landscape and its cultural heritage
- support nature-friendly, sustainable farm businesses

The Farming in Protected Landscapes programme has been developed by Defra with the support of Area of Outstanding Natural Beauty (AONB) and National Park staff from across England.

The programme will run until March 2024.

People outcomes

Your project should deliver:

- more opportunities for people to explore, enjoy and understand the landscape
- more opportunities for diverse audiences to explore, enjoy and understand the landscape
- greater public engagement in land management, for example through volunteering



Overview

In 2021, we started the 7-year transition away from EU-based rules and towards a system in which we pay farmers to improve the environment, improve animal health and welfare, and reduce carbon emissions.

This booklet explains the changes we are going to make, and what they mean for farmers.

We will be phasing out Basic Payment Scheme (BPS) payments, closing existing agri-environment schemes and introducing a new approach.

The new approach will include:

- three new schemes will reward farmers and land managers for producing public goods
- grants and other help to improve farm productivity and prosperity
- a new approach to farming regulation and enforcement

We are working with farmers to make sure that all our new schemes and support arrangements work on the ground.

Environmental land management schemes

We are introducing three new schemes that reward environmental benefits: the Sustainable Farming Incentive, the Local Nature Recovery schemes and the Landscape Recovery scheme.

Together, these schemes are intended to provide a powerful vehicle for achieving the goals of the 25 Year Environment Plan and our commitment to net zero emissions by 2050, while supporting our rural economy.

Through these schemes, farmers and other land managers may enter into agreements to be paid for delivering the following public goods:

- Clean and plentiful water
- Clean air
- Thriving plants and wildlife
- Reduction in and protection from environmental hazards
- Adaptation to and mitigation of climate change
- Beauty, heritage and engagement with the environment.