



New Forest National Park

Protecting together, shaping tomorrow

Local Cycling and Walking Infrastructure Plan (LCWIP)

Jim Mitchell, NFNPA

A partnership:
Hampshire County Council
New Forest District Council
New Forest National Park Authority
Forestry England
Wiltshire Council
Quadrant Chairs



Hampshire
County Council



New Forest
DISTRICT COUNCIL



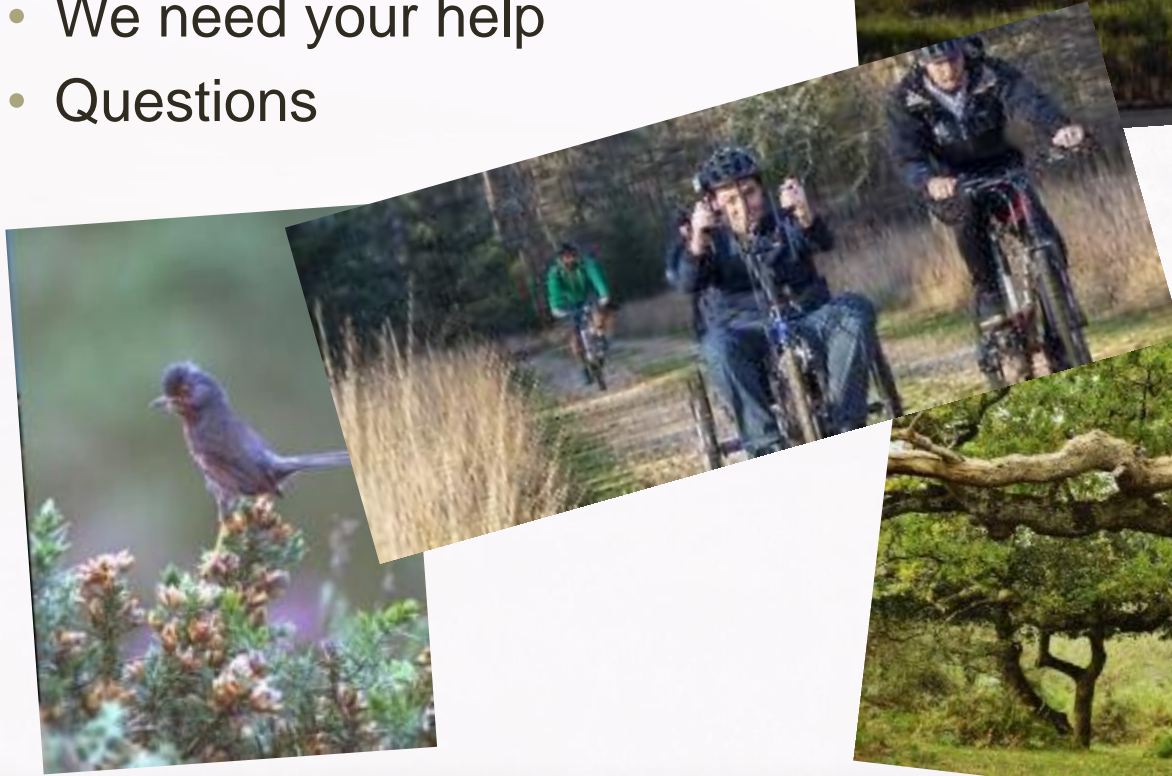
Forestry
England

Presentation to Access Forum 8 March 2021

Introduction

This presentation will cover:

- What an 'LCWIP' is
- How this fits with wider work
- We need your help
- Questions



LCWIP

What is an LCWIP?

- **Local Cycling and Walking Infrastructure Plans** are a strategic approach to identifying cycling and walking improvements required at the local level.
- 10-year period

The key outputs of LCWIPs are:

- a network plan for walking and cycling which identifies preferred routes and core zones for further development
- a prioritised programme of infrastructure improvements for future investment
- a report which sets out the underlying analysis carried out and provides a narrative which supports the identified improvements and network

<https://www.easthants.gov.uk/cycling-walking-strategy>

LCWIPs are linked to the Government's Cycling and Walking Investment Strategy and those who have plans will be well placed to make the case for future investment

Gear Change- Cycling and walking plan for England

Published in July 2020 – Forward by the Prime Minister

‘cycling and walking measures are no longer seen as an afterthought but have moved to the very heart of considerations for all transport policy and planning’

‘New cycle route provision on busy roads which consist of painted markings or cycle symbols will no longer be funded. We want to see as many as possible of the existing painted lanes upgraded with physical separation’.

<https://www.gov.uk/government/publications/cycling-and-walking-plan-for-england>

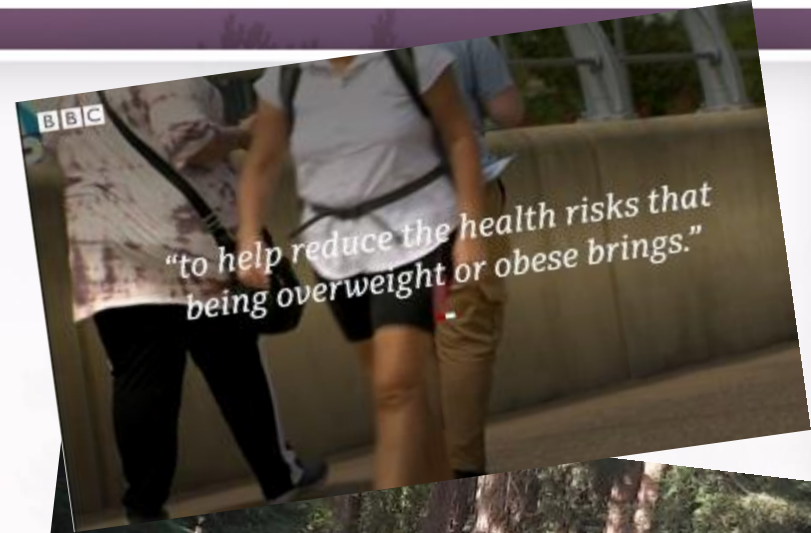
<https://www.gov.uk/government/publications/cycle-infrastructure-design-ltn-120>



How does an LCWIP for the New Forest fit with wider work and issues?

- Climate and nature emergency
- Net zero by 2050 – UK and Hampshire
- Net zero with nature by 2050 – New Forest
- Very special highly protected landscape
- Impact of recreation and car use
- Behaviour changes from Covid-19
 - Increase in cycling and walking during the summer
 - Increased demand for outdoor space
 - Attitudes to private cars / public transport
- Health inequalities increased by Covid-19
 - Existing health conditions
 - Rural isolation and loneliness
 - Low income and deprivation
 - BAME communities
 - Access to and use of nature and greenspace

Sources PHE / LGA (2020)



LCWIPs are about utility *and* recreation journeys!

Recreation management in partnership

22 agreed ongoing actions

<https://www.newforestnpa.gov.uk/conservation/managing-recreation/future-forest/future-forest-actions/>

Signed up by six statutory organisations- New Forest NPA, Hampshire County Council, New Forest District Council, Forestry England, Natural England and the Verderers of the New Forest.

Key action-

Manage the distribution and type of recreation facilities to protect the Forest, improve people's enjoyment and use resources effectively

Including the option

Selective improvements to the network of permitted off road routes for cycling ...(in particular to address key gaps in the cycle network...)

Key actions will become part of the National Park Partnership Plan

A New Forest LCWIP

- To be produced over the coming year
- Steering group formed of the financially contributing partners
 - Hampshire County Council (Lead Partner as the Highways Authority)
 - New Forest District Council
 - New Forest National Park Authority
 - Forestry England
- Verderers of the New Forest, Natural England, Wiltshire Council, Test Valley, Southampton CC, BCP all to be involved to varying degrees
- Community co-creation our ambition – Parish and Town councils
- Geographical area- whole of NFDC and whole of National Park
- Waterside LCWIP process ahead of rest of Forest, consultation will happen and then integrated into wider New Forest LCWIP

A New Forest LCWIP – timescale

Stakeholder engagement and co-creation throughout 2021

- Ongoing conversation
- Bespoke workshop, 19 March 2021
 - District / County NPA Members / Councillors
 - Interest groups- Access Forum, Cycle Working Group, NF Zero Carbon Alliance, Friends of the New Forest etc
 - Parish / Town Councils- Representation
- Landowners and estate involvement
- Further Access Forum involvement
- Spring / Summer Audit, led by HCC and Sustrans
- Autumn - Draft report and formal consultation

Cycling and walking considerations



- Towns and connectivity
- Busy villages
- Core route network
- Crossing points
- Planned development

Walking- 'ultimate zero carbon activity'

Rights of way network- footpaths and bridleways

Difference between recreation / utility journeys

Countryside access plan / Rights of way improvement plans

How interacts with open access land / Crown lands

How walking / cycling / horse-riding interact

Forest off-road network links

On-road use (given new guidance)

Inclusivity / wide accessibility- how to reduce inequality and increase representation

E-bikes- can shift journeys over 5 miles, especially in rural areas



Summary

Better network of walking and cycling routes has long been talked about – the challenge is to gain the agreement and investment required

Push for Zero Carbon by 2050 across national and local Government

An established local partnership on recreation management

A LCWIP to give real focus to our shared aspirations

Communities will be crucial to success





Thank you
Questions?

jim.mitchell@newforestnpa.gov.uk